

CYBERWAVE UPS



40 kVA / 32 kW • 50 kVA / 40 kW • 60 kVA / 48 kW



CYBERWAVE UPS

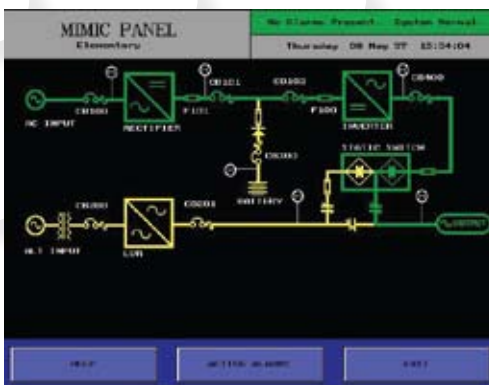


CyberWave UPS, the world's first digitally controlled UPS for custom industrial applications, combines Cyberex's hallmark rugged electrical design with the versatility of digital signal processors, field-programmable gate arrays and EPROM's to set a new standard in UPS performance and reliability. CyberWave UPS has standard features no other UPS manufacturer can match, including modbus Communications and advanced battery management capabilities and the world's first VGA, fullcolor touch-screen 8"x11" control panel (PowerPad). In addition, every CyberWave UPS incorporates Cyberex's patented Digital Static Transfer Switch design for increased system redundancy and reliability.

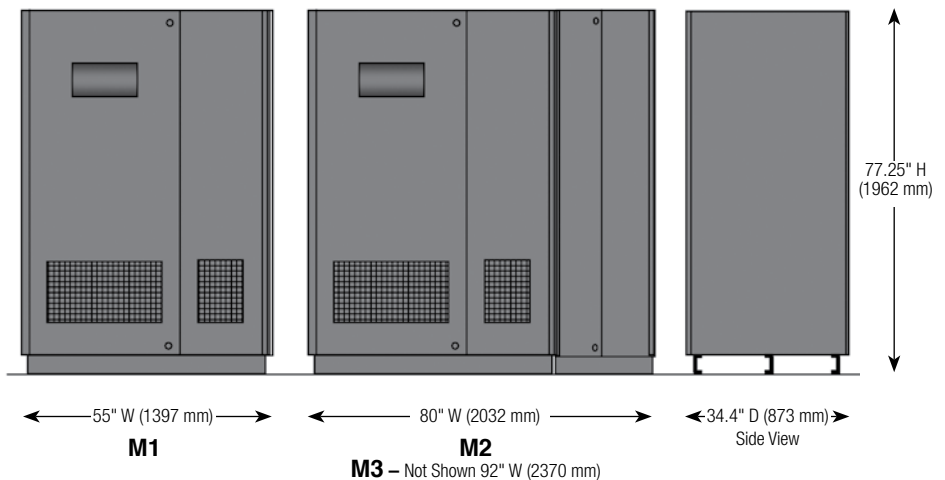
FEATURES

- IGBT-Based PWM Inverter
- Digital Signal Processing (DSP)
- Fiber Optic Datapaths
- Full Color Touch Screen Monitor Panel
- Full Isolation – Input/Output Transformers
- Industrial Grade Frame / Cabinet
- Fully Rated Static Switch
- Maintenance Bypass Switch
- Modbus Communications
- RS-232 Communications Port
- In Accordance with NEMA / UL-1778

MIMIC DISPLAY



UPS MODULE

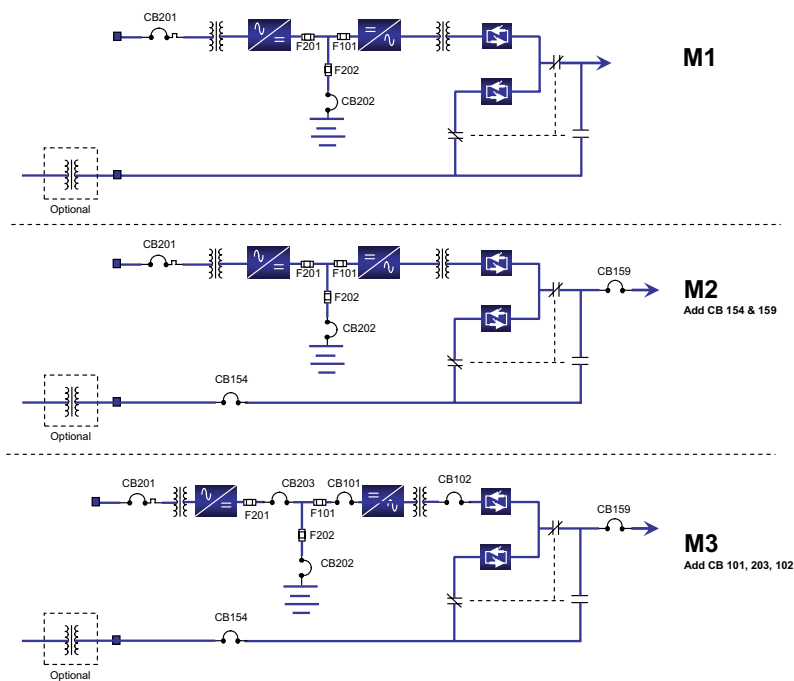


For more information go to www.cyberex.com

CIRCUIT BREAKERS/FUSE SIZES

	40 kVA/32 kW	50 kVA/40 kW	60 kVA/48 kW
CB 201 – AF/AT			
208V	400 AF/300 AT	400 AF/350 AT	600 AF/450 AT
480V	125 AF/125 AT	250 AF/150 AT	250 AF/175 AT
F 101, 201, 202 – Rating (A)			
120 VDC	600 A	800 A	800 A
240 VDC	300 A	400 A	500 A
CB 102, 154, 159 – Rating (AF)			
120 VAC	400 A	600 A	600 A
CB 202, 203, 101 – Rating (AF)			
120 VDC	600 A	600 A	600 A

HARDWARE CONFIGURATION



Inverter



Isolation Transformer

AC Input

Input Voltage	480 VAC, 3W+G 208 VAC, 3W+G
Max Input Current@ Rated Load (Nominal VAC)	80 A @ 480 VAC – 197 A @ 208 VAC 107 A @ 480 VAC – 247 A @ 208 VAC 128 A @ 480 VAC – 296 A @ 208 VAC
Input Voltage Range	+10, -20% VAC from Nominal
Input Power Factor	0.75@ Full Load and Nominal
Current Walk-In	Up to Full Load in 15 Seconds
Surge Withstand	Meets IEEE 587/ANSI C62.41
Input Current THD%	30% Typical, 10% with Optional Input Filter

DC Bus/Battery

DC Voltage (Nominal)	120 VDC (60 Cells Nominal) 240 VDC (120 Cells Nominal)
DC Range	105–140 VDC – 210–280 VDC
DC Regulation	± 0.25% from 0 to 100% Load
DC Ripple	< 2% RMS Ripple @ 100% Load with Battery Connected
DC-AC Efficiency	88% (Typical)
DC End Volts	1.75 V/Cell End Volts

Environmental

Acoustical Noise Level	< 60 dBA @ 3 Feet
Operating Temperature	0–40°C
Relative Humidity	0–95% Non-Condensing
Access	No Rear or Side Access Required for Operations or Maintenance
AC Efficiency	Typical 83% (kW out/kW in)
Cooling	Forced Air (In Front/Out Top)
Heat Rejection	(40 kVA / 32 kW) 19,320 Btu/Hr (50 kVA / 40 kW) 24,196 Btu/Hr (60 kVA / 48 kW) 28,918 Btu/Hr
Operating Altitude	Up to 1000m w/o Derating Load

AC Output

Output Voltages	120V – (Other Voltages Available, Contact Factory)
Output Current (Nominal)	250 A @ 120 VAC 417 A @ 120 VAC 500 A @ 120 VAC
Voltage Regulation	<± 0.5% Steady State for 0 to 100% Load Change
Transient Response	<± 5% for a 100% Load Step <± 1% for a Loss/Return AC Input Power <± 5% for Manual Transfer to Bypass and Back, 100% Load <± 5% for a 100% Load Step
Recovery	Return to Within ± 2.5% of Nominal Within 16 mSec
Voltage Distortion	Linear Loads: <± 3.5% @100% Load
Overload	Up to 150% for 15-Min
Overload Static Bypass	>1000% for 1 Cycle
Frequency	60Hz (50 Hz Optional)
Frequency Stability	± 0.1% Free Running
Frequency Slew Rate	1.0 Hz/Sec Maximum

Weight

40 kVA			
M1	240 V – 2,700 lbs (1,225 kg)	120 V – 2,500 lbs (1,134 kg)	
M2	240 V – 2,700 lbs (1,225 kg)	120 V – 2,900 lbs (1,315 kg)	
M3	240 V – 3,500 lbs (1,588 kg)	120 V – 2,900 lbs (1,315 kg)	
50 kVA			
M1	240 V – 3,200 lbs (1,451 kg)	120 V – 2,800 lbs (1,270 kg)	
M2	240 V – 3,200 lbs (1,451 kg)	120 V – 3,200 lbs (1,451 kg)	
M3	240 V – 3,800 lbs (1,723 kg)	120 V – 3,200 lbs (1,451 kg)	
60 kVA			
M1	240 V – 3,500 lbs (1,588 kg)	120 V – 3,200 lbs (1,451 kg)	
M2	240 V – 3,500 lbs (1,588 kg)	120 V – 3,500 lbs (1,588 kg)	
M3	240 V – 4,200 lbs (1,905 kg)	120 V – 3,500 lbs (1,588 kg)	

3 Options: PowerPad 1, PowerPad 2 and PowerPad 3 Metering Value (1% Accurate)

Metering Features	PowerPad 1	PowerPad 2	PowerPad 3	
Rectifier	Input Voltage (All Phase)	◆	◆	◆
	Input Current (All Phase)	◆	◆	◆
	Input Frequency		◆	◆
	Output Voltage (VDC)		◆	◆
	Output Current		◆	◆
Battery	Voltage (VDC)	◆	◆	◆
	Current	◆	◆	◆
	Runtime		◆	◆
	Time Remaining		◆	◆
	Power		◆	◆
	Cycles			◆
	Total Cycles			◆
	Test Cycles			◆
Inverter	Voltage (RMS)		◆	◆
	Current (RMS)		◆	◆
	Frequency		◆	◆
	Input Voltage (VDC)	Optional	Optional	Optional
Output	Voltage (RMS)	◆	◆	◆
	Current (RMS)	◆	◆	◆
	Frequency	◆	◆	◆
	Real Power (W)		◆	◆
	Apparent Power (VA)		◆	◆
	% Loading		◆	◆
	Crest Factor			◆
	Peak Current			◆
	Power Factor			◆
Alternate Line	Input Voltage	◆	◆	◆
	Input Frequency	◆	◆	◆

For more information go to www.cyberex.com

5900 Eastport Blvd.
Richmond, VA U.S.A. 23231-4453
Tel: (804) 236-3300
Toll free: (800) 238-5000
Fax: (804) 236-4841



Thomas & Betts
Power Solutions