



Sustainability Management Platform

Enterprise-Level Sustainability Management

Powersmiths WOW provides enterprise-level sustainability management applications to help organizations advance their greening initiatives. By making the invisible visible and comprehensible and providing practical analytic and decision-support tools for resource management and interactive outreach and education applications, WOW helps organizations leverage the efforts of internal and external stakeholders to further resource conservation and inspire change.

Central to WOW is WOW database. Available in the cloud, the WOW database houses application content, multimedia and real-time and historical measurement data, consolidated and stored by WOW.

Data points accessible to WOW include any value that is consistently measured including:

- Data measurements from sensors and meters
- Data available from any industry standard building automation and management systems
- Manually entered data, for example, daily weights of waste sent to landfill or recycling
- Data compiled on spreadsheets, for example, employee travel miles, or historical value records

Once stored in WOW's database, this data is readily accessible to WOW's many applications (apps).



WOW orchestrates the efforts of sustainability officers, energy and facility managers, building occupants and external stakeholders towards advancing an organization's sustainability goals.

Displaying and Using WOW

Because WOW runs in a standard internet browser, it can be accessed in a wide variety of formats, from a local desktop to large format touch-screen displays and free-standing interactive kiosks.

The WOW Kiosk is an attractive, free-standing unit that invites building occupants and visitors to learn about an organization's sustainability practices, through an engaging touch-screen interface. Styled to suit any decor, the Kiosk is UL Listed and conforms to ADA (Americans with Disabilities Act) guidelines.

The WOW experience is customized by your WOW administrator(s). This can be one or more people, who manage your WOW system. They create users and user groups, and assign permission to create, view and edit the content within the different WOW apps, including charts and individual data points.

Building-Out Your WOW System

Over time clients can select additional applications, add additional buildings to their account or repurpose applications to meet their unique requirements.



WOW Applications

WOW applications support resource and GHG emissions management and outreach and education. While some applications are exclusively designed to support a single functional area, most operate synergistically.

Resource Management Apps

WOW's resource management applications consolidate data from an unlimited number of sources onto a single easily accessible platform. Designed to enable effective oversight, WOW Resource management apps scale to meet present and future needs, easily incorporating additional data points and additional buildings.

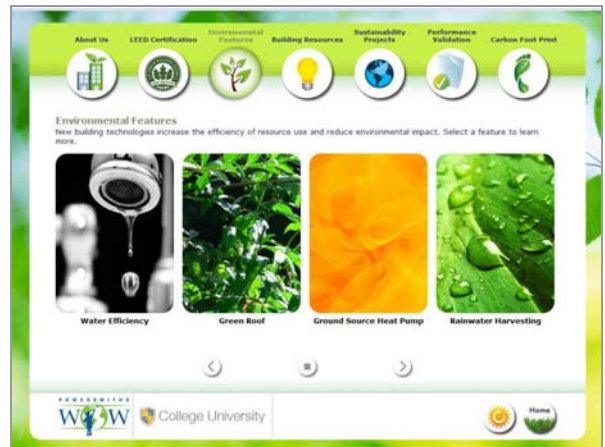
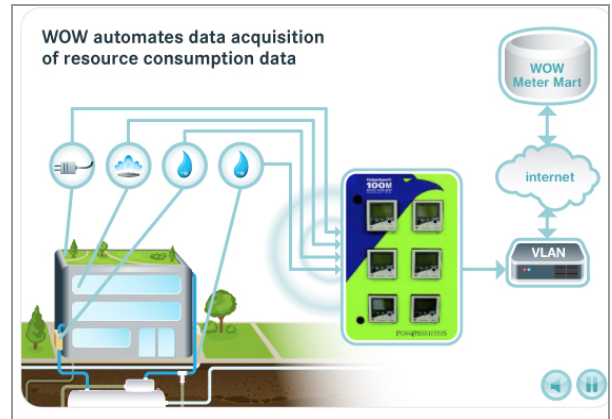
GHG Management

Based on the ISO 14064 framework, WOW's GHG applications provide auditable reports of Scope one scope two and scope three emissions, and support distributed workflows.

Outreach and Education Applications

Education and engagement of stakeholders are an integral part of achieving sustainability goals. WOW supplies the opportunity to create customizable applications to showcase your organizations sustainability initiatives and support these initiatives through continuous feedback.

The following pages describe current WOW applications. New apps are added regularly.



KPI-Showcase

Find out how the building is performing right now. The Key Performance Indicators (KPI) Showcase app provides an instant view of all building metrics and compares real-time performance against building objectives.

The KPI-Showcase provides you with an early warning system to identify anomalies in building systems' performance, before they become acute.

It can also be used as a dynamic screen saver on WOW's public outreach and education Kiosk shows building occupants and visitors how the building is meeting its performance objectives.



High Performance Check List (LEED, CHPS)

This application explains how your building achieved certification under a high-performance building framework. The application comes complete with a comprehensive library of images and text that describe and explain the underlying environmental principles behind each possible credit point (currently available for LEED and CHPS frameworks).

Users of this app can also easily customize the display by uploading images from their own facility, movie files and user-defined copy.



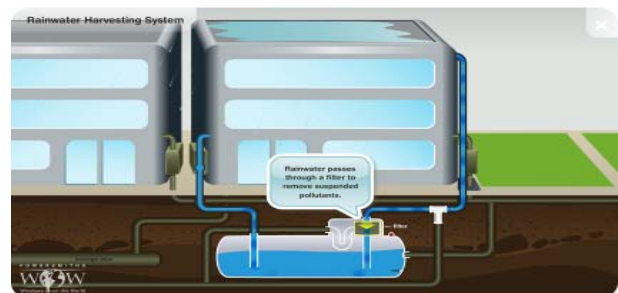
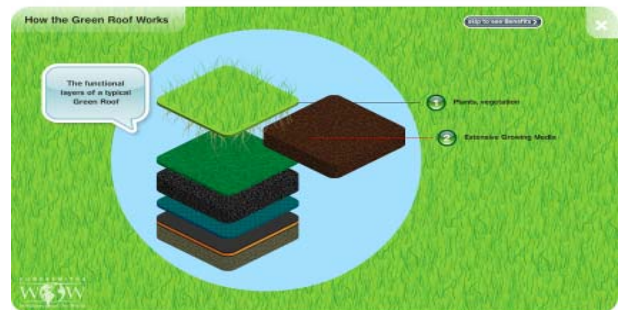
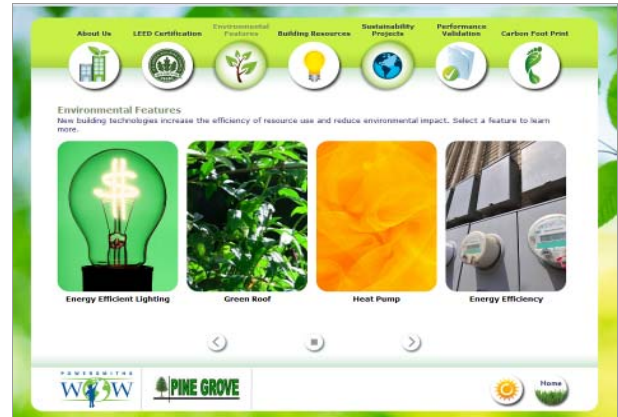
Environmental Features

This app provides a space to showcase and explain the environmental features of a building. An unlimited number of features can be included. The application can be populated with images from WOW's extensive system library or you can upload media of your own building's environmental features.

A resource library of animated features is available to explain how many green building features work and how they benefit the environment. Informative and engaging animations are available to explain:

- Solar Photovoltaic Power
- Rainwater Collection
- Green Roof
- Reflective Roof
- Efficient Lighting
- ERV's (Heat and Enthalpy Wheel)
- Variable Frequency Drives
- Heat Pumps
- High Efficiency Transformers
- Radiant Floor Heating

More animations are added to the library regularly.



Building Resources

The Building Resources app draws on live and historical data gathered from a building's meters and sensors and quantifies consumption or production over a number of different time periods.

Users are able to translate consumption and production quantities into a variety of equivalent units helping them to get a better understanding of the implications of resource use within the building.



Sustainability Projects

This highly flexible app is excellent for actively promoting sustainability programs and reporting outcomes and achievements. Program managers can use this app to describe and explain an unlimited number of initiatives using their own text and imagery.

Use the Sustainability Projects app to keep building occupants engaged in your organizations on-going sustainability initiatives, by providing regular feedback. Because it is supported by the WOW database, the Sustainability Projects app can provide timely updates on project results communicated through graphs and gauges. This app is thus ideal for supporting competitions and challenges.



Green Journey

The Green Journey app provides total flexibility for an organization to present a comprehensive overview of their sustainability goals, initiatives, milestones and achievements, while also providing a space in which to explain the reason why these measures have been undertaken.

WOW users have used this application to explain and describe:

- Waste reduction initiatives
- Travel Reduction programs
- Employee participation in community greening events
- Climate Change and greenhouse gas emissions

These are only a sample of the topic areas you may wish to cover in this highly flexible application. Topics, images and supporting text can be tailored to reflect an organization's goals and the needs of the audience.



Performance Validation

The Performance Validation app acquires data from electricity, natural gas, water meters, weather stations and manually up-loaded spreadsheet-data and provides easy accessibility to this information for analysis and review. It also stores historical and benchmark data to allow comparative analysis.

The Performance Validation app supports early detection of resource-consumption anomalies that signal equipment malfunction or failure. This assists facilities managers to take early corrective action.

The Performance Validation app is a valuable tool for organizations committed to ongoing commissioning and validation of building systems.



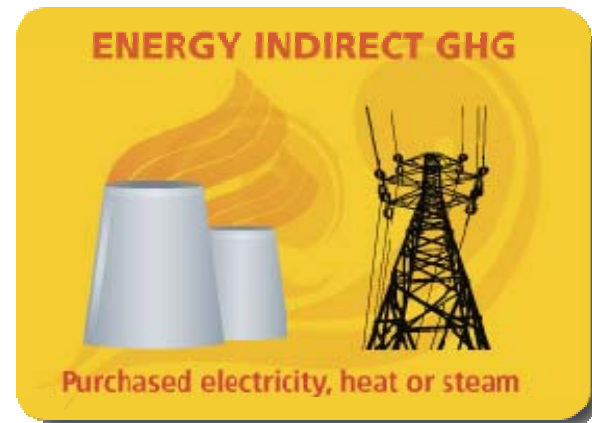
WOW GHG Management

WOW's GHG is built on the ISO 14064 framework. It provides a robust set of analytical decision-support tools to help organizations tackle scope one, two and three emissions, and mobilize the efforts of internal and external stakeholders.

WOW GHG app helps organizations to:

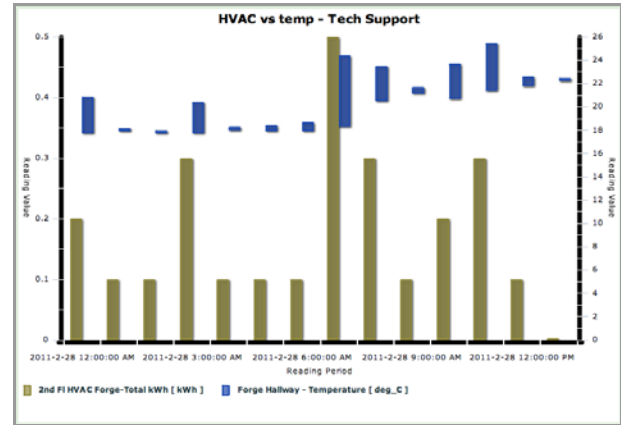
- Collect analyze and report emissions in real-time, down to individual data streams
- Benchmark performance and correlate emissions to intensity metrics and weather conditions
- Evaluate upstream emissions by tracking and reporting emissions by product, or by vendor
- Attribute embedded GHG emissions to their own products and services, at the factory door or at the final destination
- Track emissions in real-time at the organizational level, or split out and review emissions by product/process/region/supplier

WOW GHG Management transcends carbon accounting programs, through its power to seamlessly integrate with other WOW apps. This enables organizations to involve and engage multiple stakeholders including customers, employees and supply chain in their GHG measurement and reduction strategies. By leveraging the efforts of all internal and external stakeholders, organizations can accelerate progress towards meeting their emissions targets.



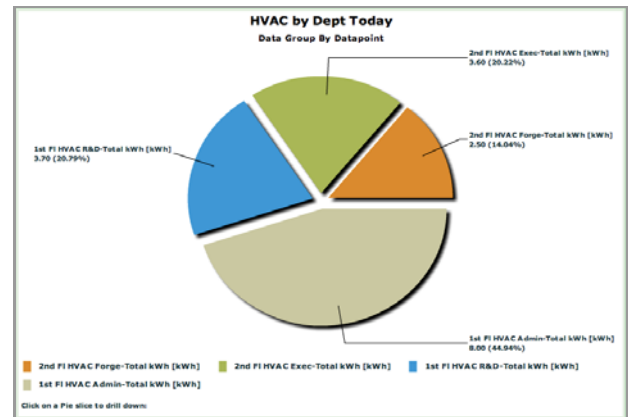
Charting Engine

The new charting engine is a powerful application to support decision support. Used in conjunction with the GHG app and Performance Validation app, the charting engine provides tools for multiple types of graphs with tools for drilling down into data and comparing actual results to benchmarks and targets.

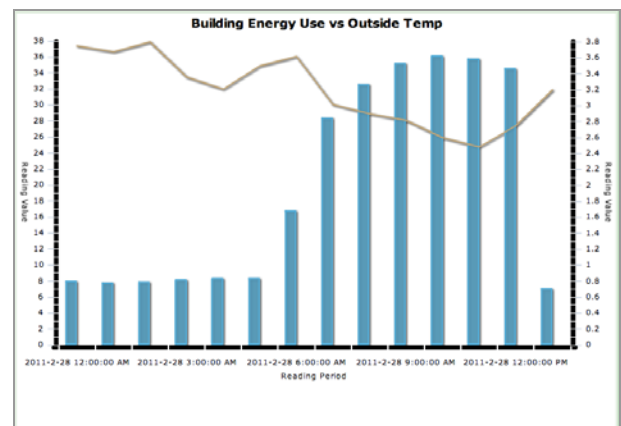


My Dashboard

The My Dashboard app enables users to customize their private WOW space to provide quick access to the data most important to their role. For example, energy managers may wish to monitor the effects of energy conservation measures by selecting a group of charts that measure current consumption against benchmark performance or performance targets.



Because WOW is available on the cloud, managers can easily access their dashboard, anytime, anywhere over the web and soon over their cell or tablet using the soon to be released mobile app.



About Us

This app can be used to describe the organization's mission statement, acknowledge system sponsors or describe your organizations progress towards greater environmental sustainability. As the name of this app is user defined, you can simply reflect your message.

With the ability to rename the app button and customize the media and text description, this app has been used to describe the organization's mission statement, detail sustainability goals, provide credit to sponsors of the WOW system, showcase the design and construction team, and more. It's up to you.

Weather

The Weather app provides up to the minute reports of local weather and weather forecasts.



To find out more about how WOW can help to advance sustainability in your organization, schedule a live demo with one of our WOW experts today.

Toll free: (800) 747-9627 or register for a demo online at:

www.powersmiths.com/wowdemo/