

Water Leak Detection, Facilities Monitoring Systems & Integration Solutions

SEAHAWK LEAK DETECTION

SeaHawk Water Leak Detection products detect and annunciate the presence of any conductive fluid. These products provide reliable, scalable solutions to accommodate any leak detection need while mitigating the potential for costly business outages and downtime in facilities worldwide.

Patented Leak Detection Cable

- Helps eliminate false alarms commonly associated with other leak detection cable
- Plenum rated
- Easy installation, lies flat after installation
- Dries quickly
- Compatible with any RLE SeaHawk controller



SeaHawk Controllers and Water Leak Detection Cable

SeaHawk Controllers

- Single zone, multi-zone, and distance read
- Easy integration with existing alarm monitoring systems
- IP addressable and web-accessible
- SNMP, BACnet, and Modbus output communications
- Hardwire outputs – NO/NC Form C dry contacts, 4-20mA



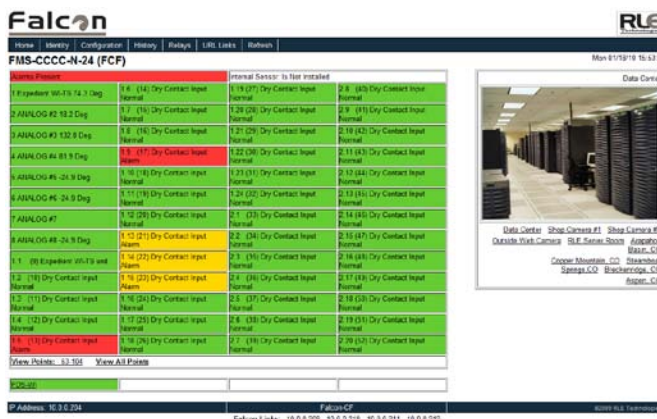
FALCON MONITORING SYSTEMS

Falcon Monitoring Systems monitor environmental conditions and the status of equipment in critical areas. These Web-based alarm monitoring, notification, and control systems do not require external computer hardware or software. All configuration and alarm logging is stored on the unit and can be accessed remotely from a Web browser.

Falcon products are stand-alone systems that can also be easily integrated into existing building management or network management systems.



Falcon FMS, F1000/3400 & F110



Falcon FMS - Web Interface

Falcon Flexibility

- Accommodates digital dry contacts, analog inputs (4-20mA, 0-5VDC, and 0-10VDC), Modbus, SNMP, and BACnet integration protocols
- Direct alarm notification via email, SNMP, Modbus, BACnet, and direct dial-out (optional internal modem)
- Relay outputs provide the ability to turn equipment on or off and to lock or unlock doors
- Scalable products: 8 to 104 inputs





Convergence Simplified!

Raptor integration and custom solutions include a comprehensive facility management system, services to design custom equipment, and standard products and sensors. Raptor products easily integrate into existing management and monitoring systems to provide enhanced visibility of critical equipment and environmental conditions.



GFM 600 Ground Fault Monitor



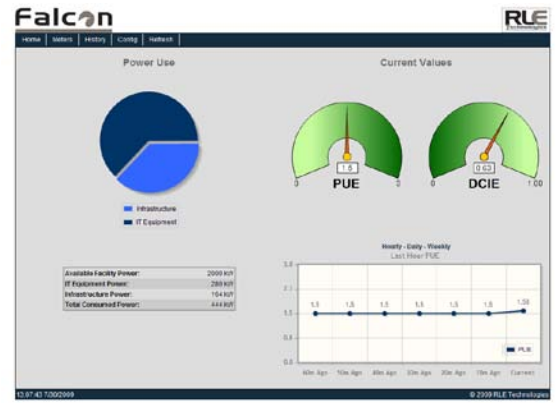
Power Fail Monitor



FDS-Wi Wireless Gateway



Environet Monitoring and Control System



MetricWise Power Utilization Effectiveness (PUE) and Data Center Infrastructure Efficiency (DCiE) measurements



Relay Replicator



RA1x2 Alarm, Signal Splitter & Relay Replicator

About RLE Technologies

Established in 1984, RLE Technologies is a leading provider of water leak detection and web-based monitoring systems that enable businesses to protect mission-critical infrastructure. RLE has earned the reputation for reliable and cost-effective monitoring systems with organizations, companies, and government entities worldwide.

Select Customer List

- ABBOTT LABORATORIES | AIRLINE PILOT ASSOCIATION | AMERIFAST | ATT | BANK OF AMERICA
 BRISTOL MYERS SQUIBB | CAYENTA INC | CHASE MORTGAGE | CITIBANK | CITY OF LOS ANGELES | COCA COLA
 COLUMBIAN FINANCIAL GROUP | COMCAST CABLE | COX COMMUNICATIONS | DOW CHEMICAL | EXXON MOBILE | FUJII
 GE CORPORATE R&D CENTER | GEOREX LOGISTICS | HAILSLIP CORPORATION | HEWLETT PACKARD
 HOWARD HUGHES MEDICAL INSTITUTE | INTEL | JP MORGAN CHASE & COMPANY | KODAK | LIFE SAFETY SYSTEMS
 LOCKHEED MARTIN | METRO POWER | NASA | NASD | NATELCO COMPANY | NAVAL AIR WARFARE CENTER
 NORTH AMERICA TELECOMMUNICATIONS | NEW YORK STOCK EXCHANGE | NEW YORK TRANSIT AUTHORITY
 PACIFIC BELL INTERNET SERVICES (NOW AT&T) | PMC SIERRA | QUEST DIGITAL MEDIA | ROAD RUNNER
 SBC INTERNET (NOW AT&T) | SEC | SIAC | SPRINT | SOUTHWESTERN BELL | SWITCH & DATA | TASNET | TELEGLOBE
 THE TRANE COMPANY | TIME WARNER | T-MOBILE | UNIVERSITY OF PENNSYLVANIA | UNIVISION | USAF
 US POSTAL SERVICE | VERIO DATA CENTER | VERIZON | WASTE MANAGEMENT | WATSON WYATT WORLDWIDE
 WELLS FARGO | WESTINGHOUSE | XO COMMUNICATIONS



Although the information contained in this document is believed to be accurate and correct, RLE Technologies assumes no responsibility, and disclaims all liability, for any damages resulting from the use of this information or any error or omission in this document. RLE Technologies does not warrant, guarantee, or make any representations as to the performance, fitness for use, safety, or reliability of any existing or future wiring, equipment, additions or modifications to equipment, or any other component of the original or modified system. Specifications are subject to change without notice. 14005 Rev 6.4 (1/2010) ©2010 RLE Technologies

20413 Crimson Place
 Leesburg, VA 20175
www.criticalpowergroup.com