

MISSIONCRITICAL POWERDISTRIBUTION ZF SERIES



DID YOU KNOW?

Cyberex invented the **first stand-alone STS in 1971** and the **first fully digital unit in 1994**. Cyberex continues to lead the market with breakthrough technologies.

MISSION CRITICAL POWER SWITCHING AND DISTRIBUTION IN ONE INTEGRATED CUSTOM SYSTEM – ZF SERIES BY CYBEREX

Cyberex's Zero Footprint system combines dual path computer-grade power transformation and grounding, automatic dual source digital switching, system monitoring, and distribution, all in a single, factory tested system. Installation time, costs, and errors are reduced in this factory tested system.

Cyberex, the industry leader in Digital Power Switching Systems, offers you its SuperSwitch Technology in a custom configured distribution package. This integrated system provides the performance and features of a custom multi-cabinet design in a smaller, more reliable, package. The Zero Footprint series frees up valuable floor space for your facility while its factory assembly and testing enhance the reliability of your overall system.

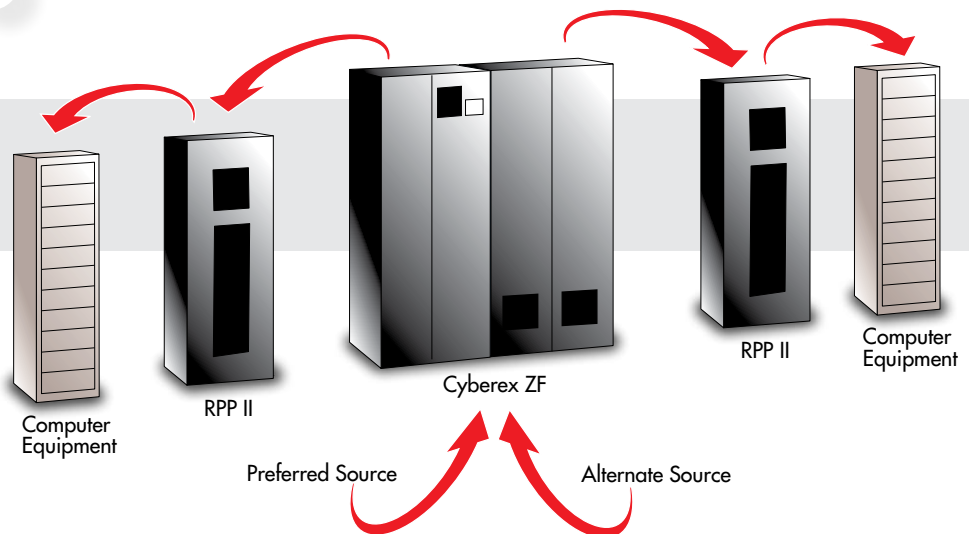
PROVEN COMPONENTS AND PERFORMANCE

- **Integrated DSTS and distribution** improves reliability and availability of your critical power system
- **SuperSwitch3 operator interface** does not compromise reliability or ease of use
- **Secondary positioned DSTS** architecture puts redundancy closer to loads – reducing potential failure points
- **Configurable output distribution** can be packaged to accommodate any downstream distribution requirements
- **Software-guided system operation** of DSTS eliminates the potential for operator error
- **Remote monitoring** interfaces to building management system
- **Compact footprint** maximizes usable floor space compared to conventional multi-cabinet solutions
- **Easy access design** minimizes time required to maintain system

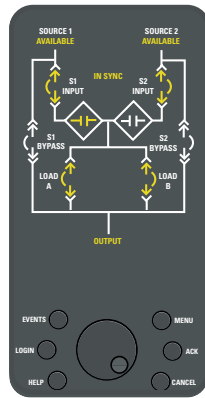
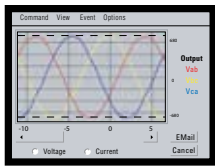


Front view of Zero Footprint showing system modularity

ZERO FOOTPRINT
PROVIDES ADDED
RELIABILITY TO
ANY ARCHITECTURE



For more information go to www.cyberex.com



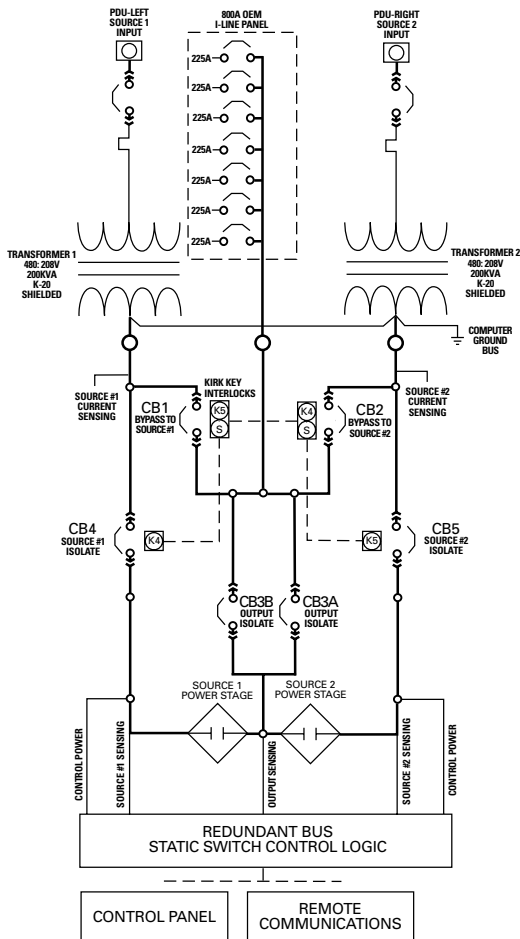
Navigate and control the SuperSwitch with confidence using a rotary mouse and triple redundant system status display; active mimic panel, LCD and LED indication.

Standard

- Dual Input K Rated Computer Grade Isolation Transformers
- 100% Continuous Duty Rating
- Digital Signal Processor Based, Fully Digital Switching Controls
- (6) Plug-In Circuit Breaker Configuration
- Dual Maintenance Bypass Design
- Redundant Output Distribution Breakers
- Key Interlocking for Safety and Accuracy
- Comprehensive System Interface Panel
- Operator Guided Bypass Controls
- System Mimic Display
- LCD Display
- 2500 Real-Time Event & Alarm Log
- Transfer Counter
- Metering Display of kVA, kW, Ipeak, Phase, Voltage & Frequency
- Multiple Layers of Password Protected Controls
- Modbus Communications Interface

Optional

- Waveform Capture
- Up to (2) I-Line Output Distribution Panelboards
- Up to (4) 42 Circuit Output Panelboards
- Output Distribution Breaker Monitoring



OPERATING PARAMETERS

Input Voltage	480V*
Output Voltage	208/120V
Frequency	50 or 60Hz
Automatic Sense & Transfer Time	Less Than 4ms

*Other input voltages available as options

PHYSICAL DIMENSIONS

Output Distribution	kVA/Amps	Output Voltage	Dim. (WxDxH)
(2) Output Breakers	144kVA/400A	208/120V	92"W x 36"D x 78"H
Up to (10) Output Breakers	216kVA/600A		103"W x 36D x 78"H
Up to (20) Output Breakers	288kVA/800A		126"W x 36"D x 78"H

The Zero Footprint Series features two main breakers, two impedance-matched transformers and DSTS to create the ultimate mission critical system.

DID YOU KNOW?

Cyberex has over 30 years of experience, more than any other manufacturer

Electrical

kVA	75-300kVA
Input	3 Phase, 3 Wire + Ground
Input Voltage	480V @ 60Hz
Output	3 Phase, 4 Wire + Ground
Output Voltage	208/120V 480/277V @ 60Hz
Transformer Ratings	K20 (Std.) K4, K13 (opt.)
Transformer	Copper, Dual Electrostatic Shield
Transformer Temperature Rise	150°C (Std.) 80°C, 115°C (Opt.)
Transformer Compensation Taps	2 1/2% (4 x FCBN, 2 x FCAN)
Transformer Insulation	220°C
Neutral Rating	200%

Operating Conditions

Temperature (Operating)	0 to 40°C
Temperature (Storage)	0 to 60°C
Transformer Audible Noise	<60 dBA (Max.)
Maximum Operating Altitude	8,200 Ft (2,500 M)
Operating Efficiency	98%

General

SCR	Fully Rated, Hockey-Puck Type
Cooling	PDU – Convection STS – Dual Redundant Fans
LCD	Graphical User Interface
STS Power Supplies	Triple Redundant
STS Internal Bus	Dual Redundant
STS TVSS	40kA

Communications

Password Protection	Defined User Tiers
Protocol	Modbus RTU (RS-485); Modbus TCP
STS Alarm Notification	Email (or Email to Pager)
Emergency Power Off	Remote (Std.) Local (Opt.)
STS Relay Contacts	5 (Std.)
Waveform Capture	(Opt.)

Power and Event Management

Metering	kVA, kW, Ipeak, Phase, Current, Voltage, Frequency, Power Factor, kVA Demand, THD, Percent Load, Sag, Surge, Transient
Event Alarm Log	2500 Events

Standards

NEMA	All Applicable Standards
UL	PDU – UL 478 Listed or Compliant STS – 1008 Listed
FCC	FCC Compliant (Part 15)
NEC	All Applicable Standards
ANSI	C62.41

Thomas & Betts



Thomas & Betts Power Solutions
5900 Eastport Blvd., Bldg. V
Richmond, VA U.S.A. 23231-4453

Toll free: 800.238.5000
Tel: 804.236.3300
Fax: 804.236.4841
www.cyberex.com